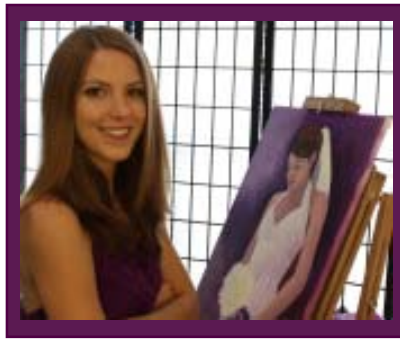


## A Little Bit About ....



---

### Emily Fossum

An art study trip to Europe first opened Emily's eyes to what has become a true passion in her life: pursuing classical forms of art. A native of the metroplex area, Emily completed her Bachelor of Arts degree at Dallas Baptist University in 2009, with a concentration in drawing and painting. In addition to participating in a number of solo and group exhibits during her tenure at D.B.U., Emily also served as Coordinator of the first and second annual Art Showcases at the university, building on her desire to help others share their creativity within a larger community.

Emily's husband Mitch serves in the U.S.A.F., and his transfer to the pilot training program at Sheppard Air Force Base brought Emily to Wichita Falls in August, when she quickly connected with the Kemp Center in hopes of following her second passion: teaching. She organized and led a youth drawing program beginning in October, and is excited about continuing her teaching with both drawing classes for youth and portraiture classes for adults here at the Kemp in 2010.

