

## **Anyone Can Draw!**

These 90-minute drawing sessions, good for both the beginning and experienced artist, will teach fine art and realism drawing techniques. Working from still life and photographs, the instructor will teach you how to see light and dark, recognize negative space, shading, perspective, and more. (This is ***not*** a cartooning, animation, manga, comic, or caricature class.)

Adults – youth age 16 and up with approval. Tuition includes classroom use of basic materials (see below).

Class size is limited to 10, so register early to ensure your spot!

DAY / DATES: Tuesdays, September 14, 21, 28, 2010

CLASS TIMES: 4:00 P.M. – 5:30 P.M.

REGISTRATION DEADLINE: Noon preceding day (Monday)

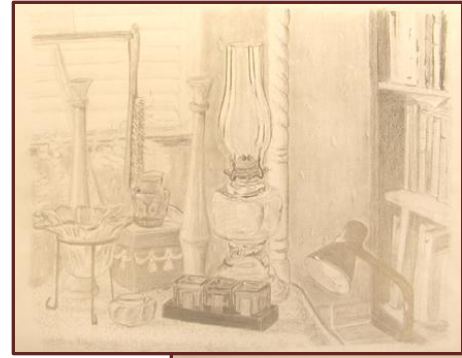
TUITION: \$30 non-members / \$27 members

MATERIALS FEE: None

SUPPLIES TO BRING: Basic materials (ruler, pencil, eraser, paper) will be provided. Continuing students will want to purchase their own expanded set of drawing supplies (see list below) or may ask instructor to furnish a complete starter pack for approximately \$40.

Suggested supply list for ongoing students:

- 12" wooden ruler with metal edge.
- Mars mini dusting brush.
- Jumbo lap desk.
- 11x14 Strathmore medium drawing pad (micro-perforated).
- ProArt drawing sketch and drawing set (includes most specialized pencils).
- 2 pastel white Conte pencils.
- Staedtler 9-pc set (including: eraser shield, 5 tortillions, sandpaper, & kneaded eraser).



---

## **A Little Bit About ... Jesse Holalde**



A lifelong student of art, Jesse enjoys including art as a creative part of his life. While adept in several mediums, Jesse enjoys helping others develop the skills of basic drawing: learning to “see” what it is you are drawing, understanding perspectives, and experimenting with light and shadow.

Jesse has been commissioned to create several original works of art, and most recently was asked by the Art Institute of Pittsburg to use a number of his works in future classes.